



**Acceptable oral health
chews and toys**

All varieties of the CET line



Purina Dental Chewz



Rawhide sticks



Bully Sticks



Rubber Balls



Greenies



Kong Toys



Rawhide Chews



Pig ears



Swizzles



Look for this sign of approval on all oral care products



Please visit VOHC.org for more information

Oaklawn Animal Hospital will not be held responsible.

Please read the following

All toys and chews should always be given with supervision.

Any toy or chew can potentially become a choking or obstruction hazard

Avoid these
Chews/Toys/Foods

Tennis balls



Worn teeth

Bananas



Cavities

Sweet Potatoes



Cavities

Knuckle Bone



Fractures teeth

Bone marrow bones



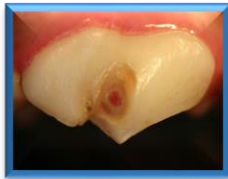
Fractures teeth

Real Bones



Fractures teeth

Examples



Fractured



Cavity



Worn

Antlers



Fractures teeth

Cow hooves



Fractures teeth

Nylabones



Fractures teeth

Ice Cubes



Fractures teeth

Himalayan chews



Fractures teeth

Rocks



Fractures teeth

Any object that cannot be bent or indented with a fingernail is too hard for our pets to chew